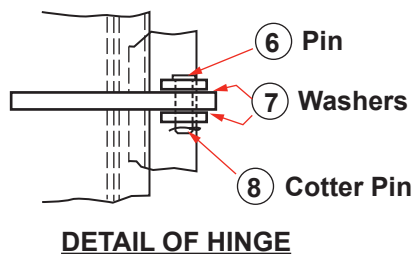
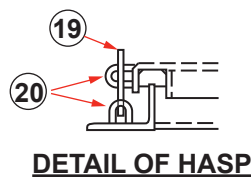
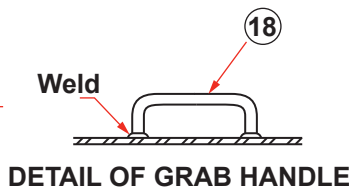
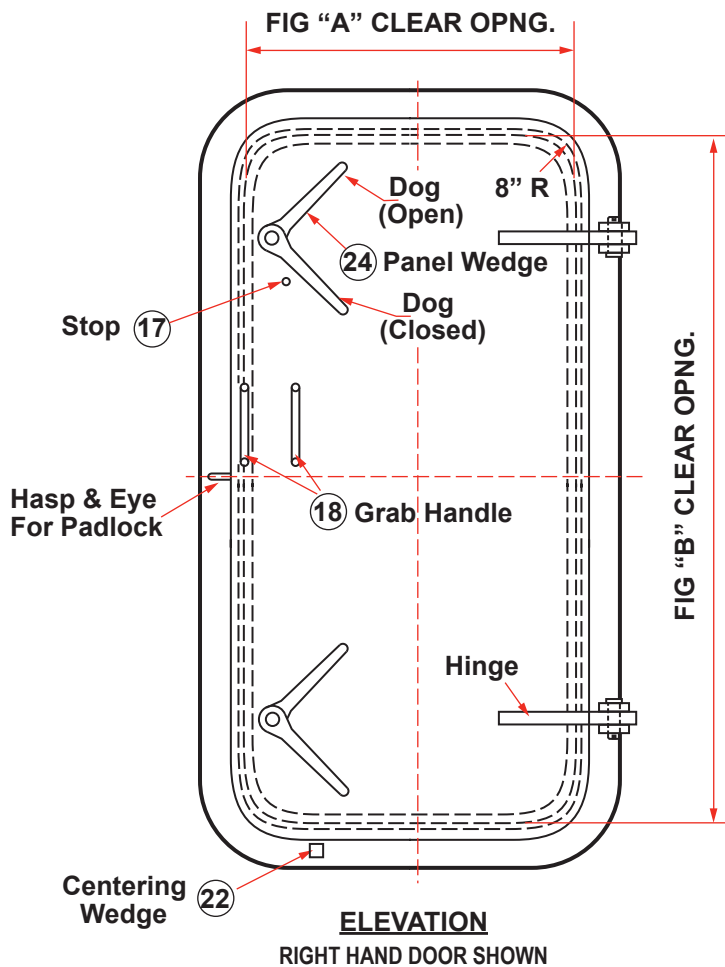




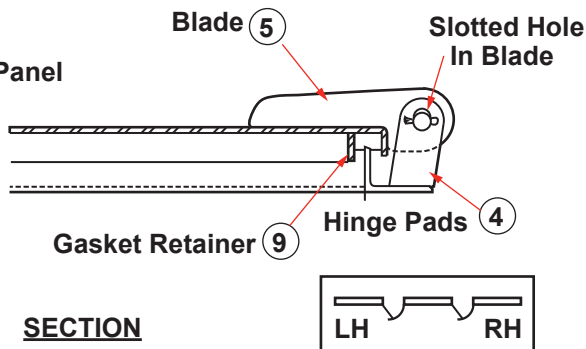
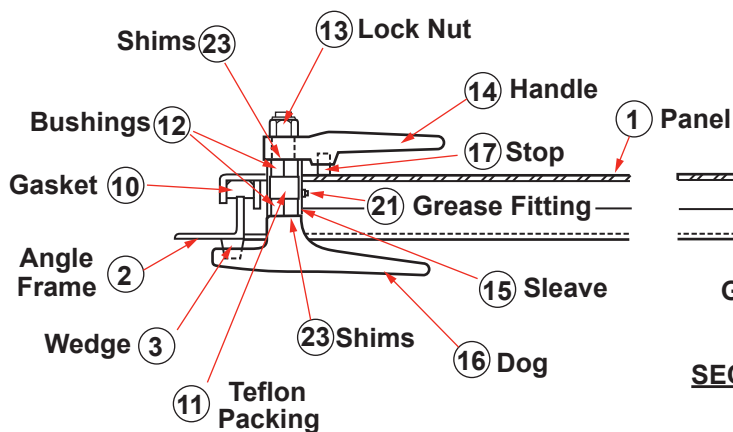
DOORS/HATCHES

WATERTIGHT DOOR WITH 2 DOGS DRAWING NO. 100



SCHEDULE OF MATERIAL

PC. NO.	MATERIAL
1	Mild Steel
2	Do.
3	Do.
4	Do.
5	Do.
6	Brass
7	Do.
8	Do.
9	Mild Steel
10	Neoprene
11	Graphite
12	Delrin
13	Mild Steel
14	Frg. Stl.
15	Mild Steel
16	Frg. Stl.
17	Mild Steel
18	Do.
19	Do.
20	Do.
21	Steel
22	Do.

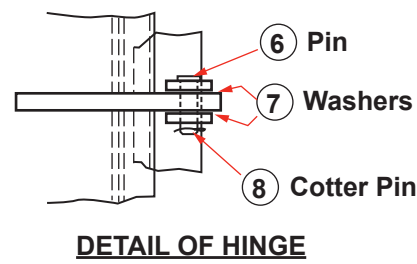
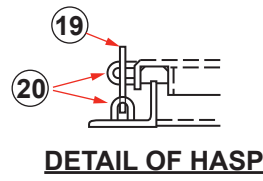
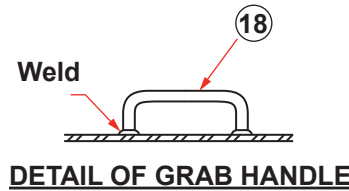
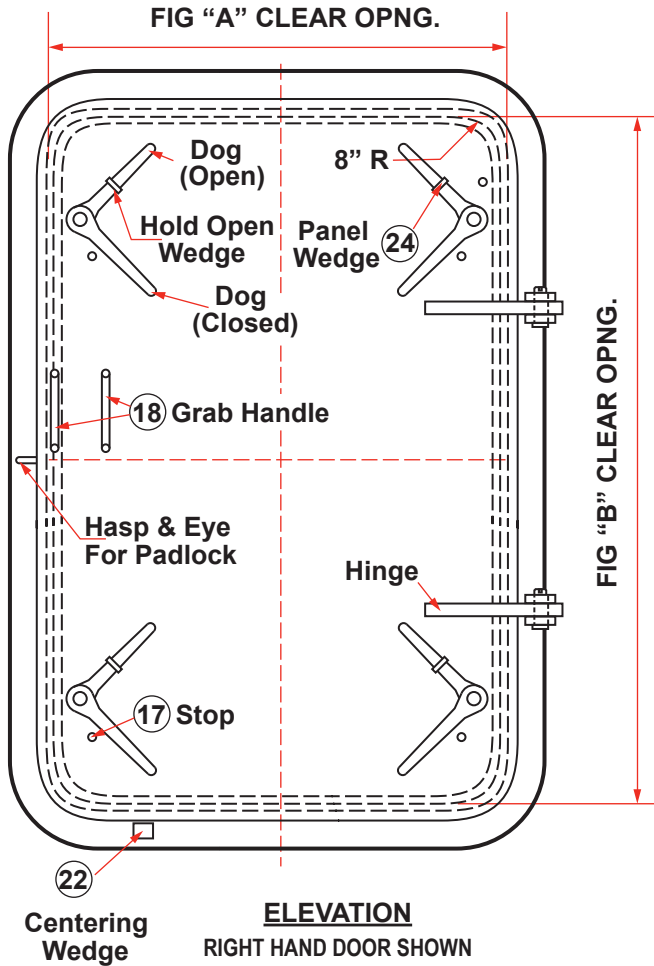


DOORS/HATCHES



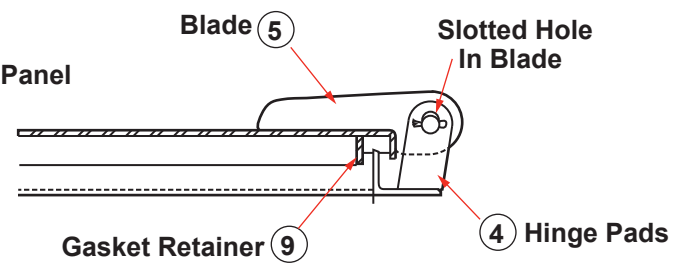
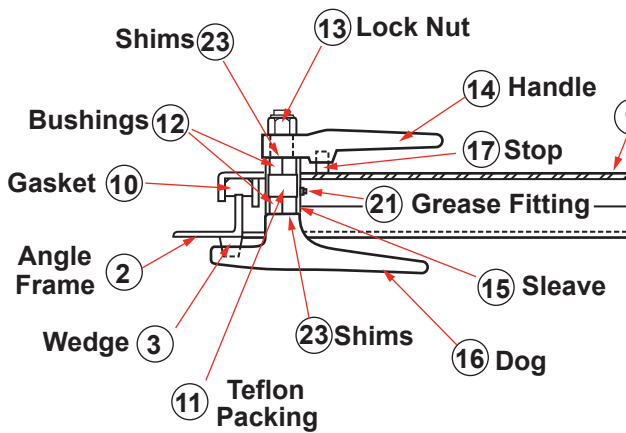


WATERTIGHT DOOR WITH 4 DOGS DRAWING NO. 101



SCHEDULE OF MATERIAL

PC. NO.	MATERIAL
1	Mild Steel
2	Mild Steel
3	Brass
4	Brass
5	Brass
6	Delrin
7	Neoprene
8	Frg. Stl.
9	Frg. Stl.
10	Mild Steel
11	Mild Steel
12	Mild Steel
13	Graphite
14	Mild Steel
15	Mild Steel
16	Mild Steel
17	Mild Steel
18	Mild Steel
19	Mild Steel

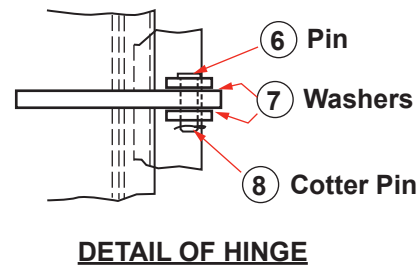
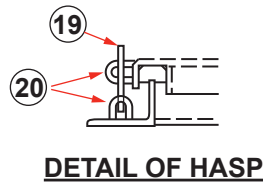
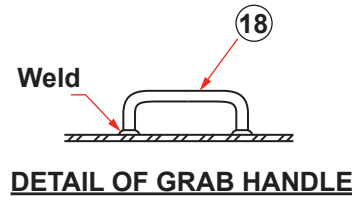
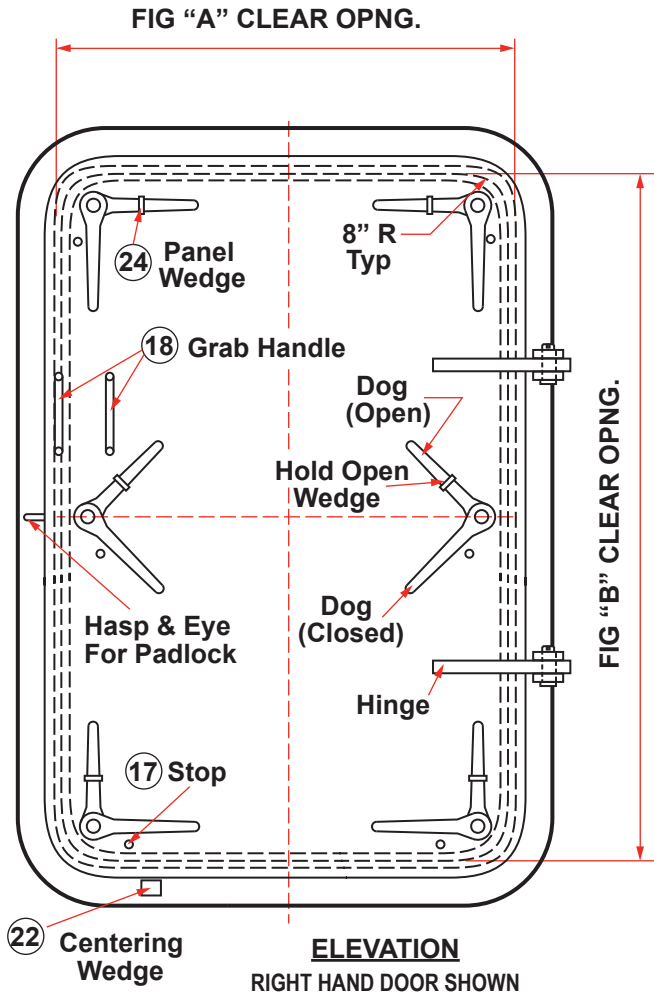


DOORS/HATCHES



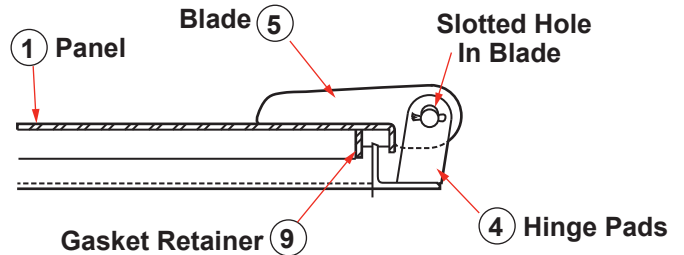
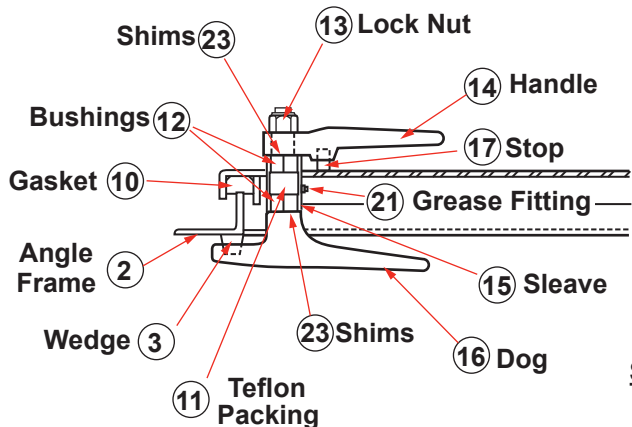
DOORS/HATCHES

WATERTIGHT DOOR WITH 6 DOGS DRAWING NO. 102



SCHEDULE OF MATERIAL

PC. NO.	MATERIAL
1	Mild Steel
2	Mild Steel
3	Brass
4	Brass
5	Brass
6	Delrin
7	Neoprene
8	Frg. Stl.
9	Frg. Stl.
10	Mild Steel
11	Mild Steel
12	Mild Steel
13	Graphite
14	Mild Steel
15	Mild Steel
16	Mild Steel
17	Mild Steel
18	Mild Steel
19	Mild Steel
20	Mild Steel
21	Mild Steel
22	Mild Steel
23	Brass

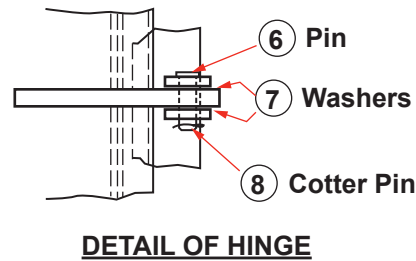
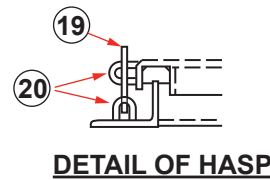
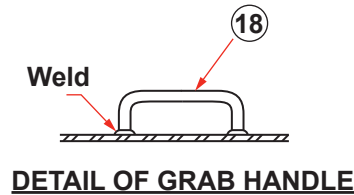
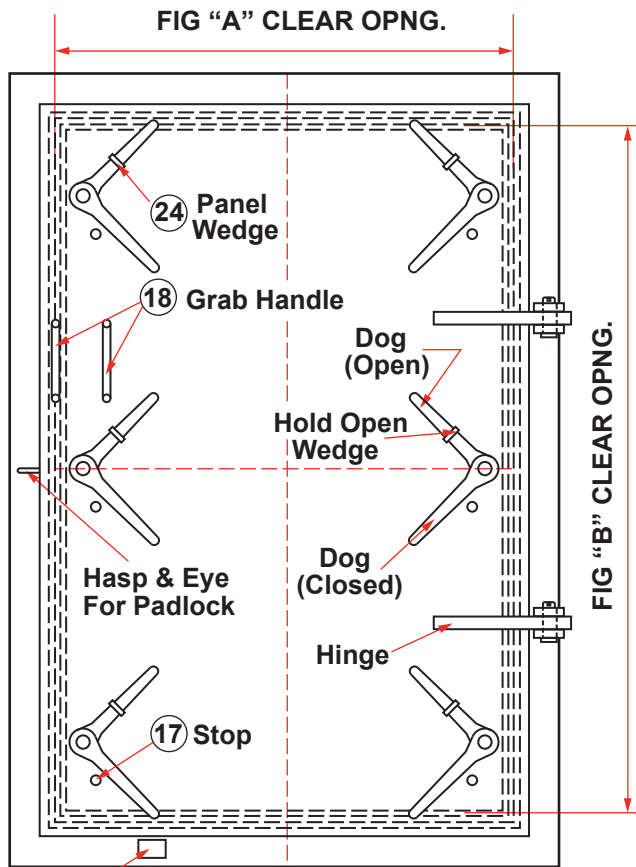


DOORS/HATCHES



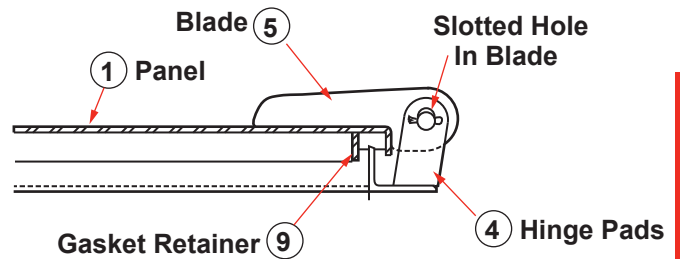
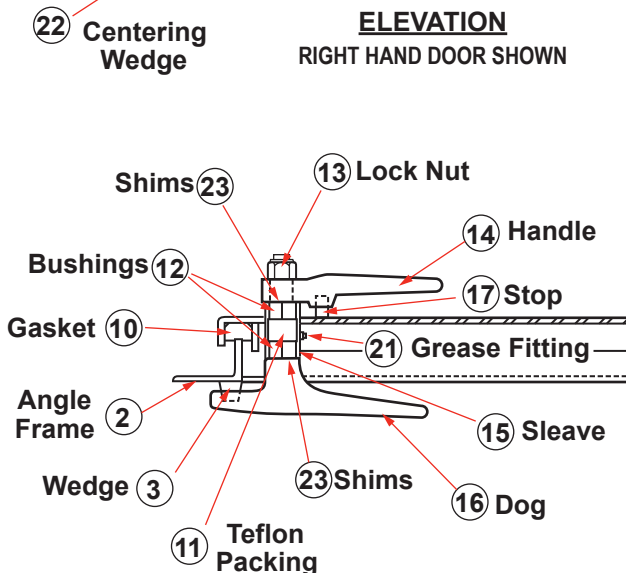


WATERTIGHT DOOR WITH 6 DOGS DRAWING NO. 103



SCHEDULE OF MATERIAL

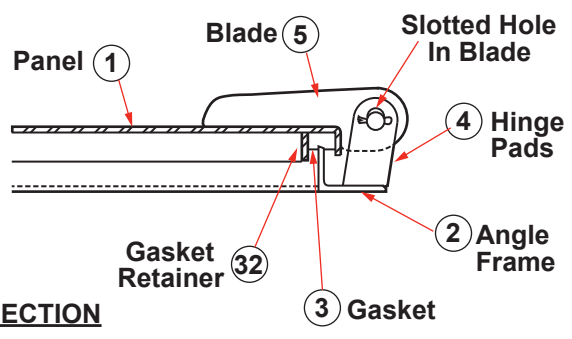
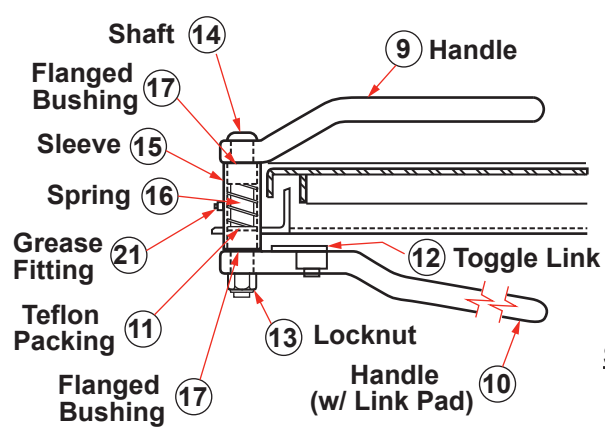
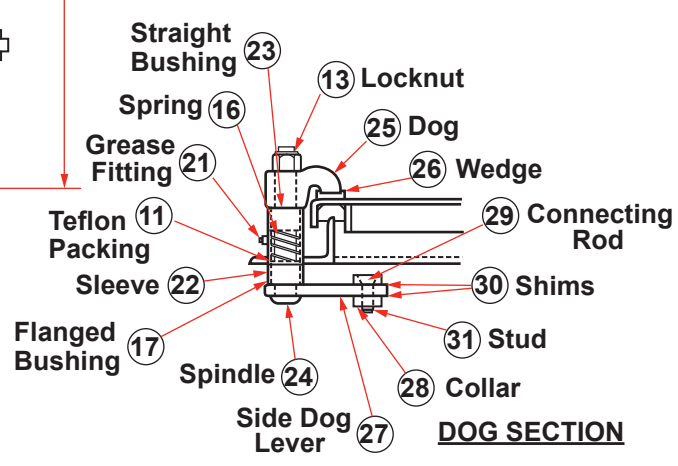
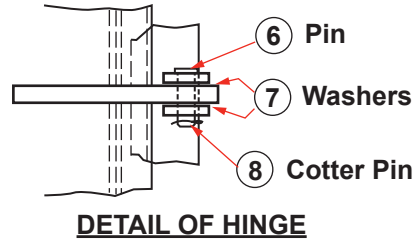
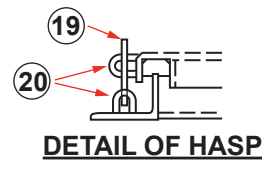
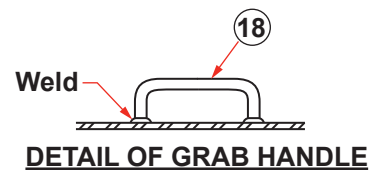
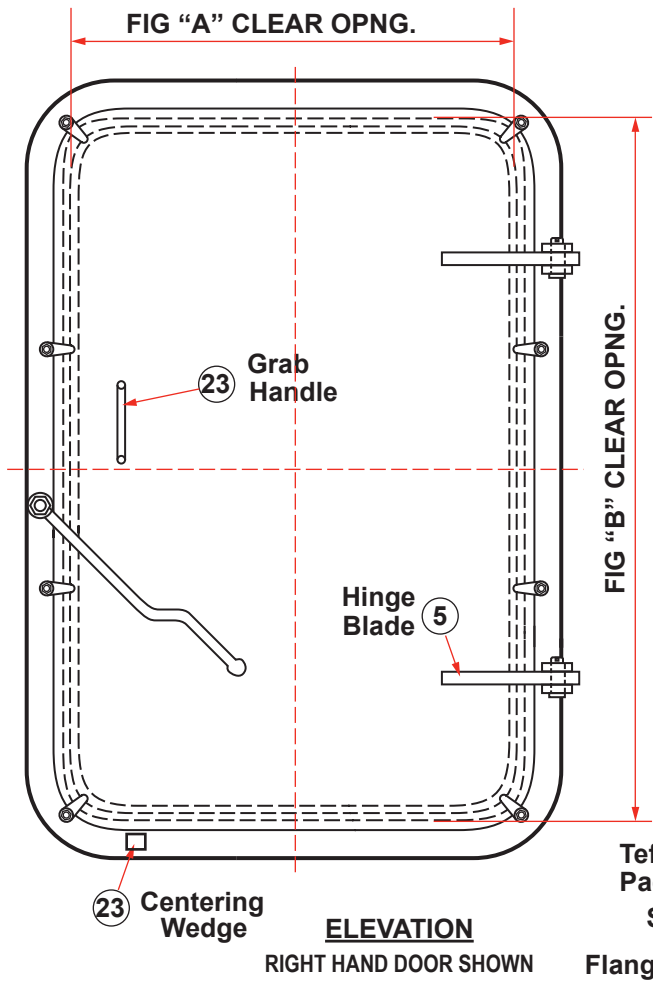
PC. NO.	MATERIAL
1	Mild Steel
2	Mild Steel
3	Brass
4	Brass
5	Mild Steel
6	Delrin
7	Neoprene
8	Frg. Stl.
9	Frg. Stl.
10	Mild Steel
11	Mild Steel
12	Mild Steel
13	Graphite
14	Mild Steel
15	Mild Steel
16	Mild Steel
17	Mild Steel
18	Mild Steel
19	Mild Steel
20	Mild Steel
21	Mild Steel
22	Mild Steel
23	Brass
24	Mild Steel



DOORS/HATCHES



QUICK ACTING WATERTIGHT DOOR DRAWING NO. 109



SCHEDULE OF MATERIAL

PC. NO.	MATERIAL
1	Mild Steel
2	Mild Steel
3	Brass
4	Stainless
5	Stainless
6	Forged Stl
7	Neoprene
8	Forged Stl
9	Forged Stl
10	Oilite Bronze
11	Mild Steel
12	Mild Steel
13	Graphite
14	Mild Steel
15	Mild Steel
16	Mild Steel
17	Stainless
18	Mild Steel
19	Mild Steel
20	Mild Steel
21	Mild Steel
22	Mild Steel
23	Stainless
24	Mild Steel
25	Mild Steel
26	Mild Steel
27	Mild Steel
28	Mild Steel
29	Mild Steel
30	Oilite Bronze
31	Cold Finish
32	Cold Finish
33	Mild Steel
34	Stainless
35	Plated Stl

DOORS/HATCHES