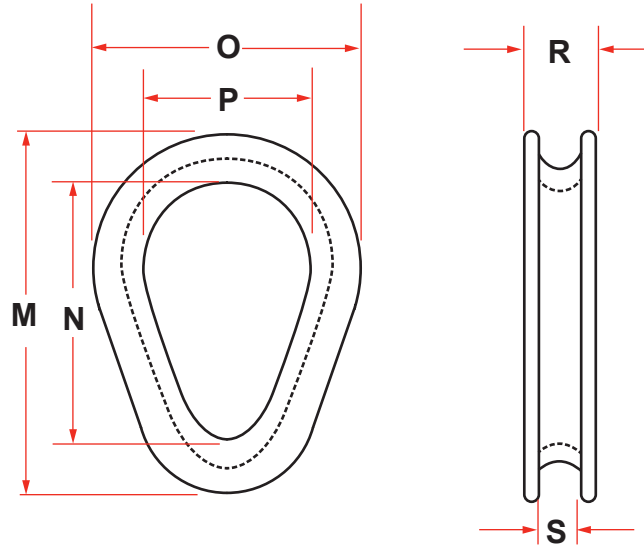




WIRE ROPE

HAWSER THIMBLES



HEAVY DUTY HAWSER THIMBLE GALVANIZED OR SELF-COLORED

CAST, 1035 S

ROPE DIAMETER	DIMENSIONS (INCHES)						WEIGHT (LBS.)
	M	N	O	P	R	S	
5/8 - 3/4	6-3/4	4-7/8	5	3	1-1/4	13/16	2-1/2
7/8 - 1	8-5/8	5-3/4	6-1/4	3-3/4	1-7/16	1-1/16	4-1/2
1-1/8 - 1-1/4	10-1/8	6-3/4	7-1/4	4-1/4	1-11/16	1-5/16	9
1-3/8 - 1-1/2	11-1/2	8	8-1/2	5	2-1/4	1-5/8	14
1-5/8 - 1-3/4	12-1/2	8	9-3/4	5	2-1/2	1-7/8	20
1-7/8 - 2	14-3/4	9-1/4	11-1/4	5-3/4	2-3/4	2-3/16	30
2-1/8 - 2-1/4	17	10-1/2	12-3/4	6-1/4	3-1/4	2-1/2	52
2-3/8 - 2-1/2	21	14-1/2	15-1/2	9-1/2	3-3/4	2-3/4	80
2-3/4 - 3	21	14-1/8	16	9	4-1/4	3-1/4	115

Larger Sized Available Upon Application.
Furnished with or without Reinforcement Plate (*Gusset). Cast Alloy Available upon Request.

WIRE ROPE

170

HOUSTON (713) 644-1183 FAX (713) 644-1185 TOLL FREE 1 (800) 233-8014 EMAIL Sales@AnchorMarineHouston.com

WWW.ANCHORMARINEHOUSTON.COM

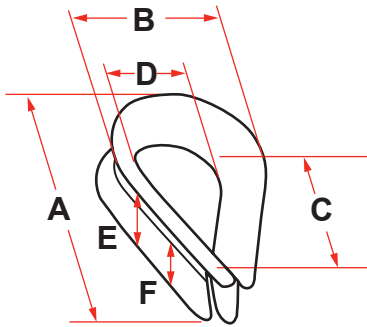


Anchor
MARINE & INDUSTRIAL SUPPLY, INC.



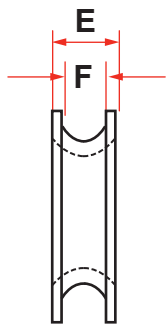
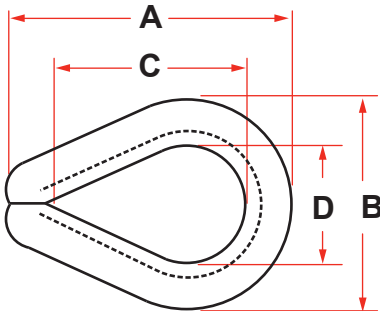
WIRE ROPE THIMBLES

STANDARD WIRE ROPE THIMBLES, GALVANIZED STEEL



CLIP AND ROPE SIZE (INCHES)	DIMENSIONS (INCHES)						MAXIMUM PIN DIAMETER (INCHES)	WEIGHT LBS. PER 100
	A OVERALL	B OVERALL	C INSIDE	D INSIDE	E OVERALL	F INSIDE WIDTH OF SCORE		
1/8	1-15/16	1-1/16	1-5/16	11/16	1/4	5/32	5/8	3.3
3/16	1-15/16	1-1/16	1-5/16	11/16	5/16	7/32	5/8	3.4
1/4*	1-15/16	1-1/16	1-5/16	11/16	3/8	9/32	5/8	3.5
5/16*	2-1/8	1-1/4	1-1/2	13/16	7/16	3/8	3/4	4.0
3/8*	2-3/8	1-15/32	1-5/8	15/16	17/32	7/16	7/8	7.5
1/2*	2-3/4	1-3/4	1-7/8	1-1/8	11/16	9/16	1-1/16	15.8
5/8*	3-1/2	2-3/8	2-1/4	1-3/8	29/32	11/16	1-1/4	36.0
3/4	3-3/4	2-11/16	2-1/2	1-5/8	1-3/32	13/16	1-1/2	50.0
7/8	5	3-3/16	3-1/2	1-7/8	1-9/32	15/16	1-3/4	90.0
1	5-11/16	3-3/4	4-1/4	2-1/2	1-3/8	1-1/16	2-3/8	105.0
1-1/8 - 1-1/4	6-1/4	4-5/16	4-1/2	2-3/4	1-3/4	1-5/16	2-5/8	176.0
1-1/2	7-1/2	5-3/8	5	3-1/4	2-1/16	1-9/16	3-1/8	330.0
1-3/4	10-3/4	7-1/4	7-1/4	4-1/4	1-3/8	1-7/8	4-1/8	590.0
2	10-3/4	7-1/4	7-1/4	4-1/4	2-5/8	2-1/8	4-1/8	595.0

* Available in opened pattern. Suggested for light duty service only.



EXTRA HEAVY DUTY WIRE ROPE THIMBLES, GALVANIZED STEEL

CLIP AND ROPE SIZE (INCHES)	DIMENSIONS (INCHES)						MAXIMUM PIN DIAMETER (INCHES)	WEIGHT LBS. PER 100
	A OVERALL	B OVERALL	C INSIDE	D INSIDE	E OVERALL	F INSIDE WIDTH OF SCORE		
1/4*	2-3/16	1-1/2	1-5/8	7/8	13/32	9/32	13/16	7.5
5/16*	2-1/2	1-13/16	1-7/8	1-1/16	1/2	11/32	15/16	14.0
3/8*	2-7/8	2-1/8	2-1/8	1-1/8	21/32	13/32	1-1/16	25.0
7/16	3-1/4	2-3/8	2-3/8	1-1/4	3/4	15/32	1-3/16	36.0
1/2*	3-5/8	2-3/4	2-3/4	1-1/2	27/32	17/32	1-7/16	51.0
9/16	3-5/8	2-11/16	2-3/4	1-1/2	29/32	19/32	1-7/16	52.0
5/8*	4-1/4	3-1/8	3-1/4	1-3/4	1	21/32	1-5/8	75.0
3/4*	5	3-13/16	3-3/4	2	1-1/4	25/32	1-7/8	147.0
7/8	5-1/2	4-1/4	4-1/4	2-1/4	1-3/8	15/16	2-1/8	185.0
1*	6-1/8	4-15/16	4-1/2	2-1/2	1-9/16	1-1/16	2-3/8	295.0
1-1/8 - 1-1/4	7	5-7/8	5-1/8	2-7/8	1-7/8	1-5/16	2-3/4	390.0
1-1/4 - 1-3/8	9-1/16	6-13/16	6-1/2	3-1/2	2-1/4	1-7/16	3-1/4	820.0
1-3/8 - 1-1/2	9	7-1/8	6-1/4	3-1/2	2-5/8	1-9/16	3-3/8	1175.0
1-5/8	11-1/4	8-1/8	8	4	2-3/4	1-23/32	3-7/8	1625.0
1-3/4	12-3/16	8-1/2	9	4-1/2	2-7/8	1-27/32	4-3/8	1800.0
1-7/8 - 2	15-1/8	10-3/8	12	6	3-1/8	2-3/32	5-7/8	2600.0
2-1/4	17-1/8	11-7/8	14	7	3-5/8	2-3/8	6-7/8	3880.0
2-1/2**	20-1/2	13-1/2	15-3/4	8-1/2	4-1/4	2-5/8	8-1/4	7500.0

* Available in stainless steel. A rugged rope thimble suggested for heavy duty services. ** Available in Cast Steel. Larger sizes available per request (with or without Gusset Plates).

WIRE ROPE